

THAILAND
**ARCHITECTURE
IN STEEL**







PHUKET GATEWAY

IDIN ARCHITECTS

The idea is to present the character of vernacular architecture in the south of Thailand through contemporary architecture. Phuket Gateway is to serve as a public space for welcoming visitors to this province, much like a living room. The building is linearly positioned facing the province entrance by utilizing the original contours of the site. The project's requirement is to make the gateway a landmark so, we came up with the idea of a 'lively sculpture' that represents and tells historical stories about Phuket to visitors.

The sculptures include concrete columns lined up for 100 m that generate the colonnade-like entrance to the Sino-Portuguese building. This building then has an arcade that connects and provides access to each part. The columns lead to a tall sculptural column covered with granite, a material representing the origin of tin as the local natural resource that brought wealth to the community a long time ago. Each individual piece of granite refers to one of the various cultures that combined to form the unique town of Phuket. Such a tall column still acts as a lighthouse in the ocean, and the ocean is a prominent destination for visitors both during the day and night.

Functional space is hidden at the back of the colonnade sculpture and trees. The internal area is comprised of a service section, such as the tourist information center, a government office, a police station, restaurant, auditorium, and an area for Islamic activities such as prayer. Those spaces are designed as one pavilion divided by pocket-sized parks, where natural light is brought in through the translucent roof. The pavilion is placed under the same roof, bringing features of simplicity, peace and humility. Visitors will experience activities and a certain atmosphere as soon as they enter the building. Also, to make the building interact with the character of the local climate, the architect allows rain and daylight into some parts of the interior spaces, following the principle that life is within natural conditions.

The roof structure of the pavilion is designed as an 'A-Frame' in response to the needs of function below, which require a wide space with no columns. Mostly wide-flange steel members are used for beams and posts, while rafters and joists are made using steel tube. Metal roofing creates shade for daytime use, and by using a rigid steel frame with local Thai patterns, introduces a good combination of modern and traditional culture.

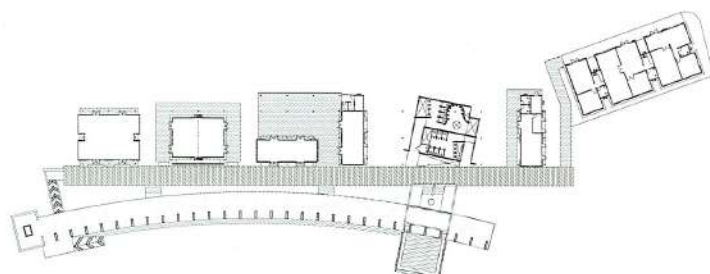
A dark steel frame also articulates the hard lines and clear rectilinear geometries of the entrance pavilion. This forms a strong contrast with the light color of the stone. Picking up the repeated pattern of the stone columns while bringing it into the much tighter rhythm appropriate to the change in material, the walls and roof of the projecting terrace use steel to create the pergola-like vertical louvers.

Location
Thepkrasatthre
Road, Phuket

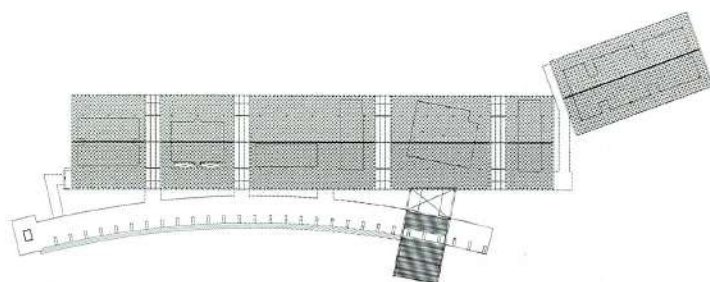
Client
Phuket Provincial Adminis-
trative Organization

Structural Engineer
Pakanut Siriprasopsophon

Area
1,600 sq. m.
Year
2007



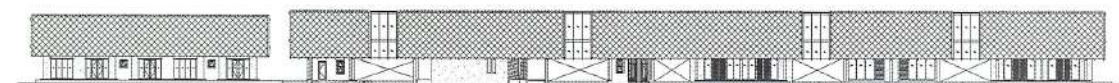
Floor Plan



Roof Plan



North Elevation



South Elevation





- 1 View point area
2 View point entrance





- 1 Skylight information center pavilions and meeting pavilions
2 Skylight between pavilions lightening the pocket-sized parks

