

# BOB MAGAZINE

INTERNATIONAL  
MAGAZINE OF  
SPACE DESIGN

B O B



**INTELLIGENTIA COFFEE'S AUSTIN**  
Inspired by local swimming holes, Intelligentsia Coffee's Austin store was imagined as an urban escape from the heat of a Texas Summer. Located in a new shiny high-rise building, the primary goal was to...

>> 062 page



**MAJIMAYA CONFECTIONERY TOOL SHOP**  
The history of Kappalushi Tool Street began in the first year of the Taisho era (1912 C.E.) with several tool shops and antiquarian dealers set up at around Kappalushi Bridge over the Shinburi River. In...

>> 068 page



**MISU**  
See the contemporary and edgy interpretation of a restaurant inside a church with classical and colonial western elements meeting fine and refined Japanese shapes in a beautiful and mesmerizing confluence of glamour and...

>> 080 page



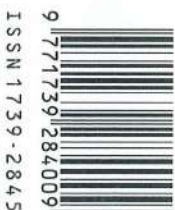
## BOB COLLECTION | MAGIC HOTEL

HEATHERWICK STUDIO | KAMITOPEN | KOMPLITS | FADD STUDIO |

UNARCHITECTE | BOB Coordination | ARK

**BOB Collection** is a design project that aims to create a 'hotel + hostel' that meets the needs of children, inspires the entertainment and playfulness of children, but also takes into account the needs of adults. The project is located in the heart of the city and arouses the inner childlike innocence of adults. According to different functional areas, the designers need plan entertainment design. Reception hall, as the main residential space and important social space for guests, is the most interesting place with rich design. Designers set up public areas as children's

entertainment space. According to the different groups of people, the loudspeaker devices in the lobby have different size, which means that children and adults can participate in the interaction. In order to create entertainment and play space for children, designers choose colliding colors to attract children's attention. Business...



ISSN 1739-2845

09

RECEIVED MAY 09 2019



# PA PRANK & HOSTEL

**Design**\_IDIN Architect **Design team**\_Jeravej Hongsakul, Eakgaluk Sirijariyawat, Pilanthana Phuawiriyaphan, Wichan Kongnok, Thuwanont Ruangkanoksilp **Location**\_Bangkok, Thailand **Built area**\_725m<sup>2</sup>  
**Completion**\_2019 **Photographer**\_Ketsiree Wongwan **Editorial designer**\_Minki Shin **Editor**\_Jill Park

Pa Prank hostel is a renovation project that transforms two shophouses into a hostel with a cafe. Unlike the stereotype of the renovation project, the hostel has traded-off a quarter of usable area to increase the quality of the place by enhancing the quality of space, light, and air ventilation altogether. It stayed away from a conventional solution which typically intends to maximize the number of guest rooms and elaborate on stylish or fanciful interior decoration. The core concept of the design comes from the shophouse's common problems – a lack of natural light and quality of space inside a building. Usually, this building type's plan has a long rectangular shape and two sharing walls with the adjacent units on both sides. Only a little daylight can pass through the front side of the building due to its typical characteristics. The rooms have two sides of openings for daylight and natural ventilation, a rare feature amongst the similar facilities nearby. The top of the rooms is a place for a balcony for the rooms on the higher level. The existing structure, along with the chapped brick wall, is in contrast with the newly-added building parts. The play between new and old is intentionally expressed in the courtyard. The rough and coarse surface of the preserved old brick wall of the former building becomes a reminiscence of the past days. The contrast does not revolve within the site boundary but also keeps playing with its neighborhoods. The idea of 'being modern among historical surrounding' reconnects the building with the urban context. By doing so, a large curtain wall was chosen as an element for enclosing the functional areas along the building's depth to reflect the well-preserved wall. On the other hand, the visitors can see a reflection of the old walls on the modern window, and the guests can have the scenery of the wall in daylight from inside the building. The characteristics of the Thai traditional shophouse's window inspire the front facade design, but the contemporary way of living also blends into the materialization of the idea. New materials like steel and black color are the main feature, leading the building to disappear from the surrounding context. In contrast, interior spaces are mainly decorated with the original traditional window's character, and the designer adopted the white color for a comfortable feel. Text offer : IDIN Architect















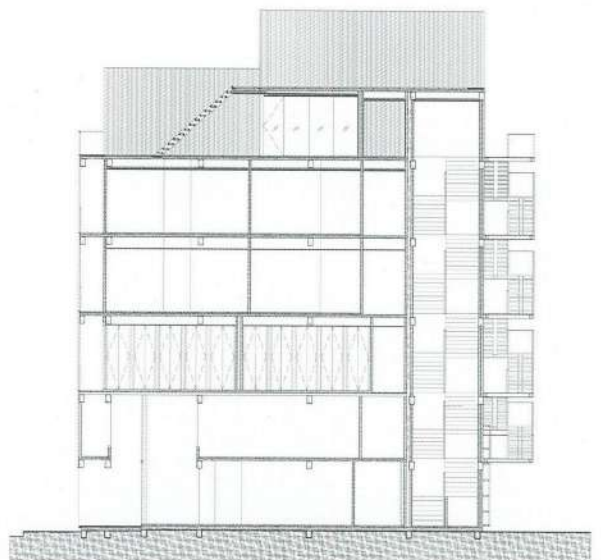
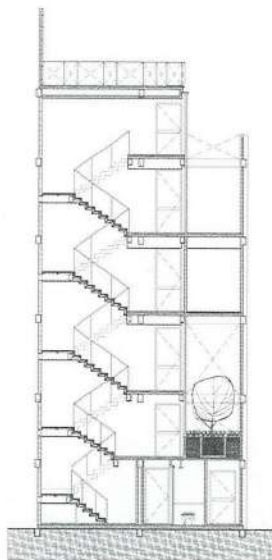
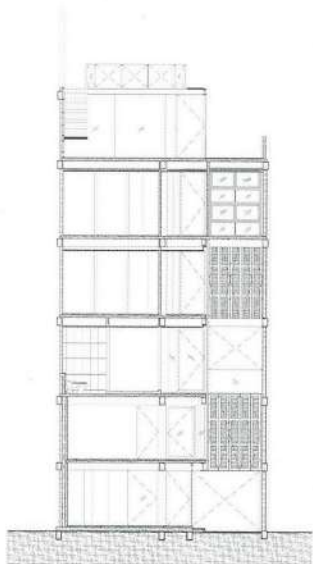
파 프랭크 호텔은 상가주택 두 채를 카페가 딸린 호텔로 전환한 리모델링 프로젝트다. 일반적인 리모델링 프로젝트와 달리 이 호텔은 사용면적의 4분의 1을 희생해 공간, 조명, 환기 성능을 향상함으로써 시설의 가치를 높였다. 객실 수를 극대화하고 세련되거나 화려한 실내 장식에 초점을 맞추는 일반적인 해법은 지양했다. 핵심 디자인 콘셉트는 건물 내 채광이나 공간 품질이 미흡한 상가주택의 일반적인 문제에서 나왔다. 보통 이러한 류의 건물은 평면이 긴 장방형을 띠고, 양쪽으로 이웃한 세대와 두 개의 벽을 공유하고 있다. 그와 같은 특징 때문에 건물 전면을 통해 아주 적은 양의 햇빛만 들어올 수 있다. 객실은 양쪽에 채광과 환기를 위한 창이 나 있는데, 주변의 비슷한 시설에서는 보기 힘든 장치다. 각 객실 상부는 위층 객실의 발코니가 된다. 갈라진 조적벽과 더불어 기존 건물 구조는 증축부와 대비를 이룬다. 옛것과 새것 사이의 상호작용은 의도적으로 중점을 중심으로 드러나도록 했다. 이전 건물의 오래된 조적벽의 거칠고 투박한 표면은 지나간

시절을 떠올려 준다. 이러한 대비는 대지 경계 안쪽에만 머물지 않고 이웃과도 어우러짐을 이어간다. '유서 깊은 동네에서 현대성을 드러낸다'는 개념은 건물과 도시 맥락을 다시 연결해준다. 같은 의미에서 대형 커튼월 시스템을 건물 세로축을 따라 이어지는 기능 영역을 담는 요소로 선택해 보존 상태가 좋은 벽을 비추도록 했다. 한편 방문객은 오래된 벽이 현대적 창에 비친 모습을 볼 수 있고, 투숙객은 낮에 건물 내부에서 벽 주변 풍경을 감상할 수 있다. 태국 전통 상가주택 창호의 특징은 정면 입면 디자인에 영감을 주었다. 그럼에도 그 구현 방식은 현대 생활 방식과 잘 어울린다. 강철, 검은색 같은 새로운 소재는 핵심 요소가 되어 건물이 주변 맥락 가운데서 사라져 보이지 않도록 한다. 반면에 실내 공간은 전통 창호의 고유한 특색을 활용해 연출했는데, 디자이너는 편안한 느낌을 주고자 흰색을 선택했다. 글 제공 : 이단 아키텍츠



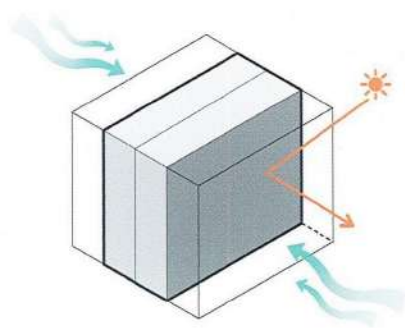




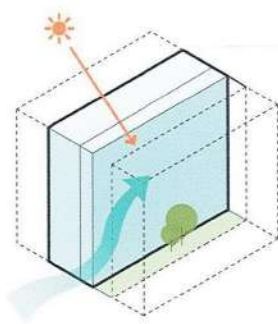


SECTION

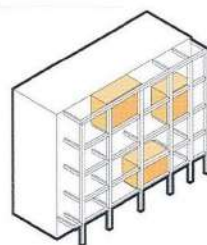




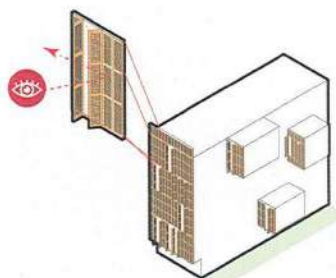
The light and ventilation are blocked by adjacent buildings



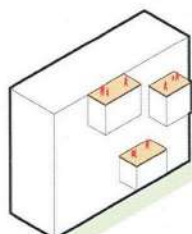
Replacing the offsetted area with a courtyard



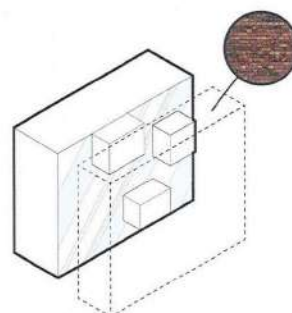
Placing private rooms and common area on existing structure for a ventilation



The steel facade inspired by traditional Thai window frame

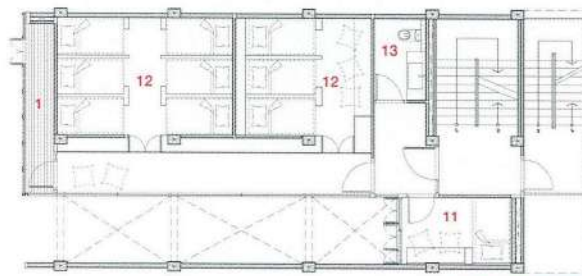


Using extended rooms roof as balconies

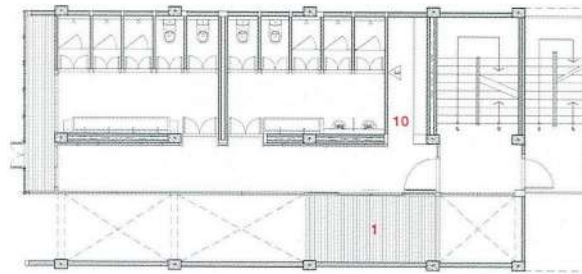


Using a curtain wall creates a contrast effect of 'modern material reflecting old'

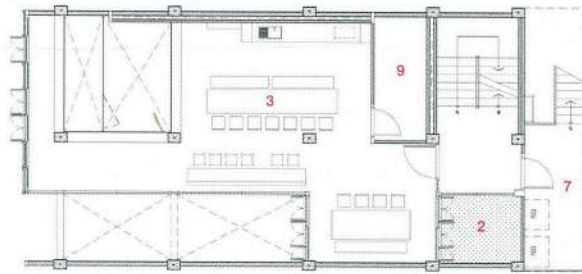




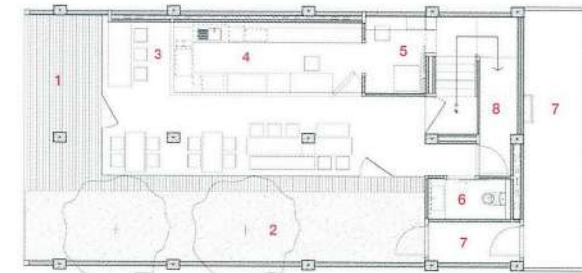
4TH FLOOR PLAN



3RD FLOOR PLAN



2ND FLOOR PLAN



1ST FLOOR PLAN

- 1 TERRACE
- 2 COURTYARD
- 3 COMMON AREA
- 4 BAR & RECEPTION
- 5 BACK OFFICE
- 6 TOILET
- 7 SERVICE AREA
- 8 STORAGE
- 9 EE ROOM
- 10 LOCKER ROOM
- 11 PRIVATE GUEST ROOM
- 12 DORMITORY
- 13 WC

