

NEW HOUSES IN ASIA

INSPIRED ARCHITECTURE AND INTERIORS
FOR THE MODERN WORLD



PA HOUSE

BANGKOK, THAILAND
IDIN ARCHITECTS

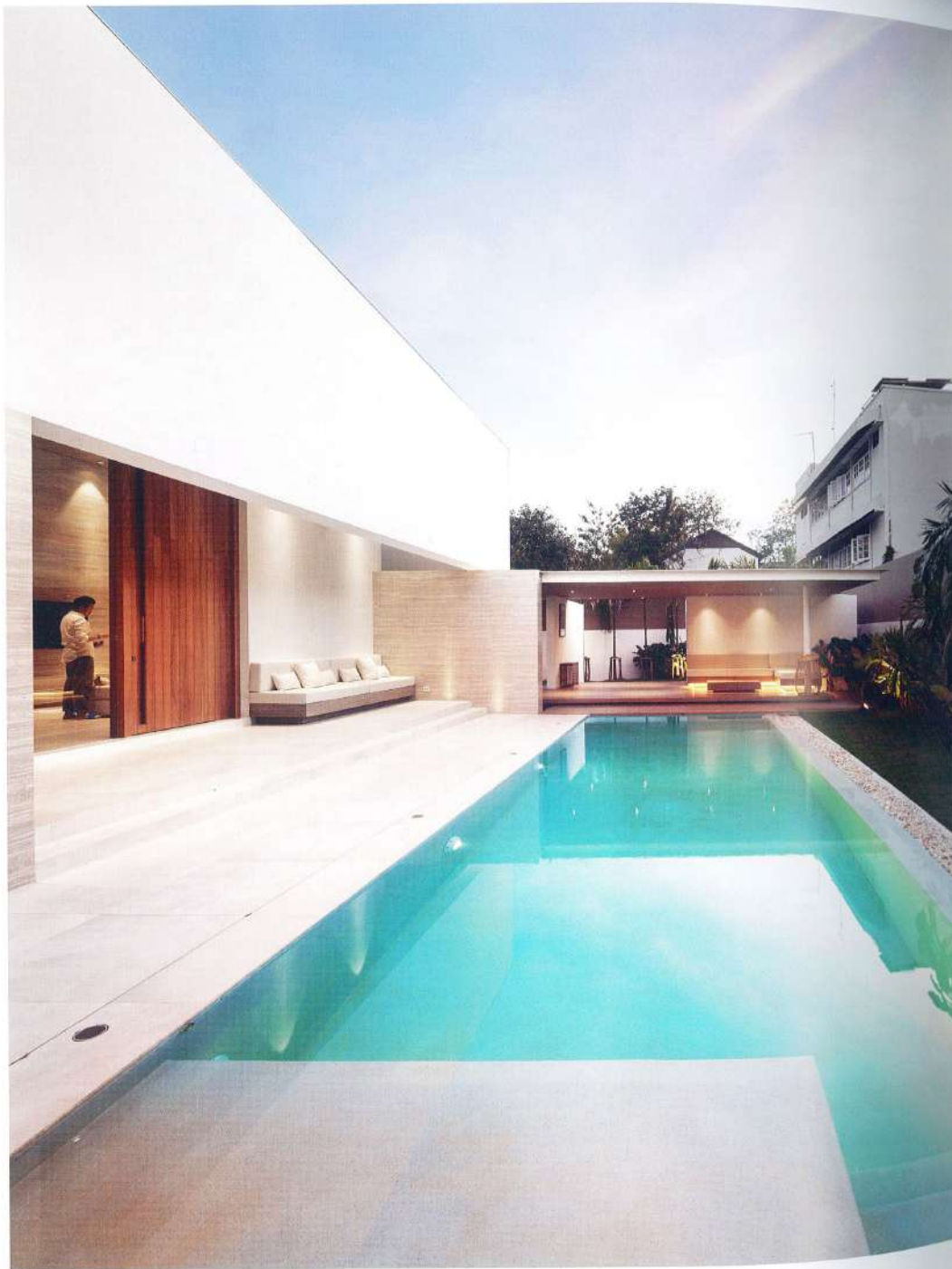




“While the desire for privacy was an important requirement, the house also needed to be roomy and open.”

PA House presents a modest, almost beguiling, front to the street, but expands into a larger residence. In so doing, it fully meets the requirement for privacy, and centers the social interaction within its interior and rear garden, allowing the inhabitants to separate themselves from the external surrounds.

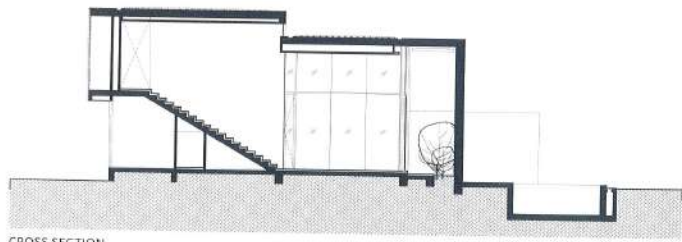
Designed for a couple, the home caters for the addition of children in the future, and also for any family members who visit. The other requirement from the client was for a large common area for living and dining, and for the couple to socialize with their friends.



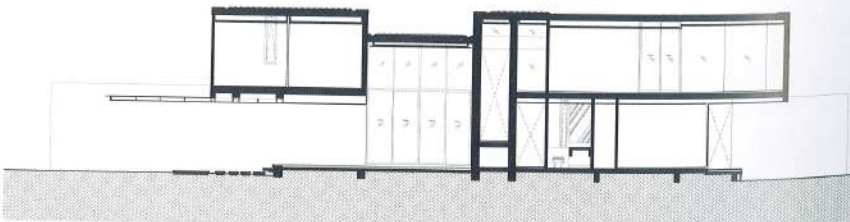
As a continuation of the need for privacy, the designers carefully considered the positioning of windows and walls, achieving a design whereby the outside-in views are screened out, but the inside-out views are opened up. While the desire for privacy was an important requirement, the house also needed to be roomy and open at the same time. The house opens up on the inside, and the main common area becomes a place not only to entertain and socialize but also to have dinner, swim in the pool, or enjoy the 180-degree views

of the garden. Each wall plane is intentionally designed to float and locate around the house to define the house's view and shade out the sunlight getting into the area simultaneously.

The result is a modern and open residence with planned strategies to mitigate against external views, creating a space where the inhabitants can play, entertain, and relax in peace. In this case, PA might stand for "Privacy Assured."



CROSS SECTION



LONG SECTION

