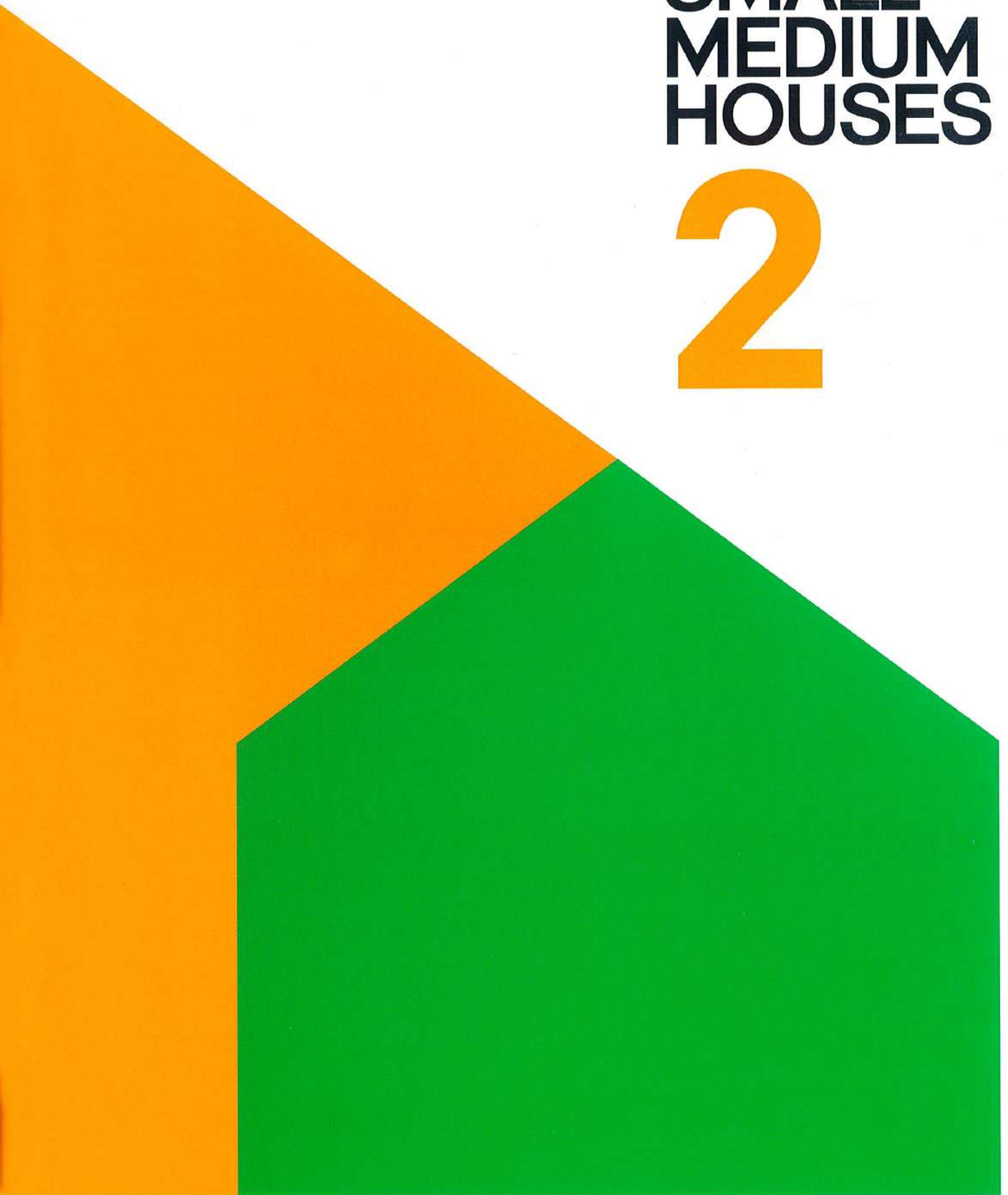


190 x 245 mm  
320 Pages  
Paperback

30 Houses  
27 Firms  
10 Cities

# SMALL MEDIUM HOUSES

# 2



Location Pak Chong,  
Nakhon Ratchasima, Thailand  
Completion 2012  
Area 260 sq.m.

Architect Jeravej Hongsakul and Rubporn Sookatup  
Interior Architect Pongpop Narapanich  
and Sarin Rangsiakbhun  
Structural Engineer Pakanut Siriprasopsothorn  
Photography Casaviva and Bean Lae Suan Magazine

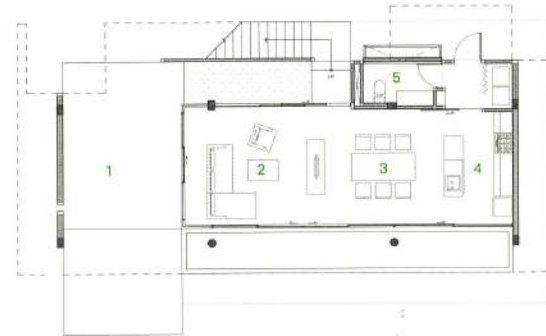






This house project was inspired when the owners were on a meditation trip in Pak Chong and searched for a tranquil place to stay. As they like to live simply, but enjoy entertaining guests, the house was positioned as far from the street as possible to maintain their privacy. A large front yard serves as a buffer. The living, dining and kitchen space are organized in a traditional open plan design, with a corridor circling the floor for Cankama (walking meditation). Guests can also use the outside staircase to avoid disturbing the living and dining areas.





GROUND FLOOR PLAN



SECOND FLOOR PLAN



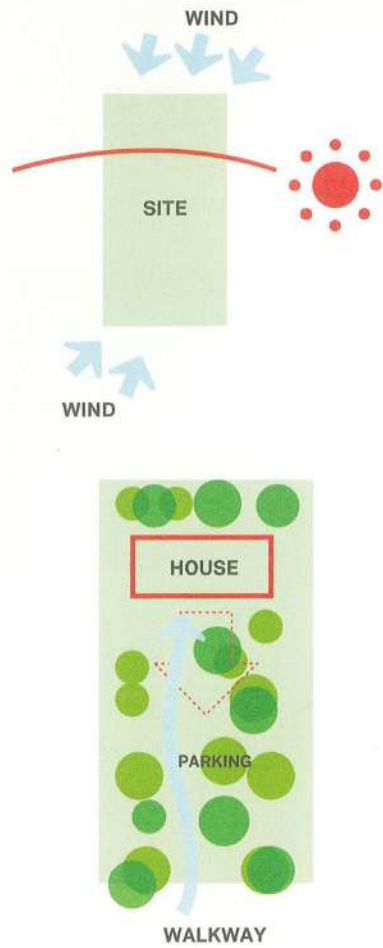
**GROUND FLOOR PLAN**

- 1. entrance hall
- 2. living
- 3. dining
- 4. pantry
- 5. toilet

**SECOND FLOOR PLAN**

- 1. hallway
- 2. master bedroom
- 3. balcony
- 4. toilet
- 5. bedroom 1
- 6. bedroom 2

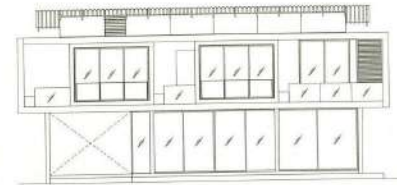




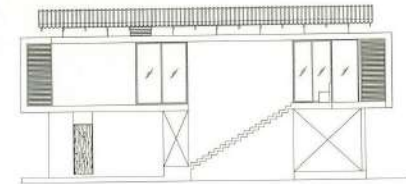
The upper level is the rest area separated into 3 bedrooms. Each one is isolated with its own balcony facing the north and opened to the same view. The balcony was designed as a cantilever without any handrails to promote the consciousness of dwellers, as opposed to the consciousness in living. The bedrooms' interior is simple and the beds are adjustable to accommodate additional guests.

The house faces north and south for air flow, with bedrooms cantilevered on both sides. Double roofs are also used to reduce heat from the upper level floor, positioned symbolically like a big umbrella over the house.

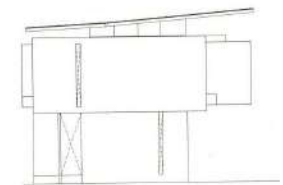




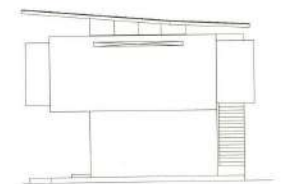
NORTH ELEVATION



SOUTH ELEVATION



EAST ELEVATION



WEST ELEVATION